



*Hanover* / 475

hanoveryachts.com / 2024

An aerial photograph of a small, sleek motorboat floating in the center of a large, vibrant green lake. The water's color is a deep, rich green, suggesting a natural or forested setting. The boat is positioned centrally, creating a focal point. The surrounding area is lush with greenery, and the overall atmosphere is serene and luxurious.

# YOUR HOME AT SEA.

The Hanover 475 is incredibly luxurious with plenty of space for storage and fun activities. It handles so well you won't be unboarding anytime soon. So gather the important people in your life and get ready for a sea voyage that will be remembered for years to come.

*Hanover* 475

2024



*Hanover* 475

2024



*Hanover* 475

2024



*Hanover* 475

2024

# TECHNICAL SPECIFICATIONS



**LENGTH**  
47' / 14.30 m



**BEAM**  
13' 1" / 4 m



**DRAFT**  
41" / 1.05 m



**DRY WEIGHT**  
30,864 lbs / 14,000 kg



**FUEL TANK CAPACITY**  
400 gal / 1514 L



**WATER TANK CAPACITY**  
105 gal / 400 L



**HOLDING TANK**  
20 gal / 75 L



**CAPACITY**  
14 day / 5 Night



**CRUISING SPEED**  
29.1 mph / 46.8 kph



**WIDE OPEN THROTTLE**  
39.2 mph / 63 kph



**DEADRISE**  
20°



**BRIDGE CLEARANCE**  
11' 6" / 3.55 m



# LUXURY AND COMFORT

Step inside, and you'll instantly sink into comfort with a luxurious double bed in every cabin. Our thoughtfully designed Jack and Jill layout ensures easy access to each bathroom.

Revel in the breathtaking views through panoramic windows, while ample cabinets provide storage solutions for all your needs. We've spared no expense in using premium marine materials ensuring your utmost comfort throughout your stay.



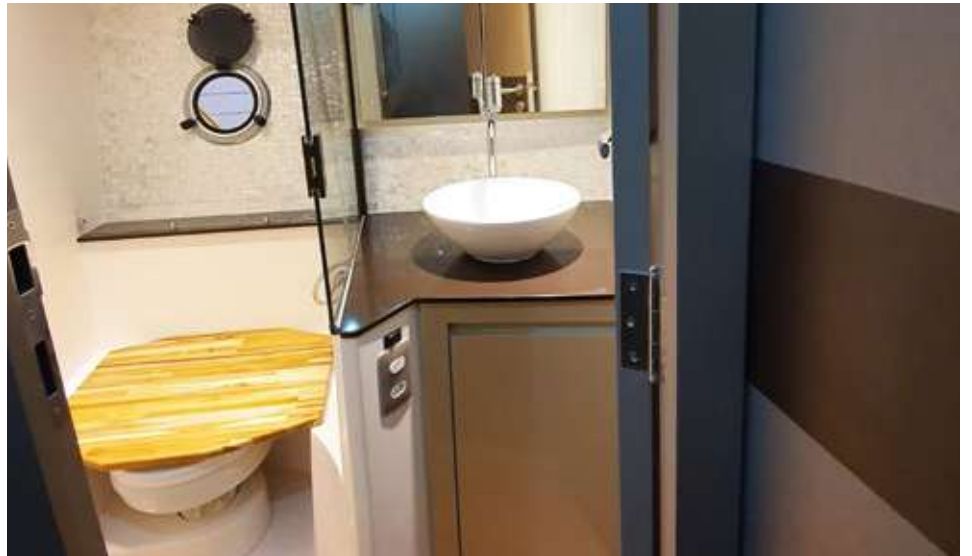
**MASTER SUITE**



**BOW SUITE**



**HEAD**



*Hanover*475

2024



## PRATICALITY AT REACH

Equipped with all the essentials for extended voyages at sea, this vessel provides ample room for cooking and meal storage. The galley boasts a splendid open design that ensures you are never isolated from fellow passengers.

Additionally, expansive panoramic windows invite abundant natural light on the most splendid days, illuminating the surroundings with a breathtaking glow.



PASSAGEWAY / GALLEY



# CREATE LONG-LASTING MEMORIES

The Hanover 475 offers ample space to host all the people you cherish the most, whether you'd like to invite them to unwind and soak up the sun, enjoy a barbecue, or dance the night away with a top-tier sound system. It's got everything you need for a memorable gathering.





*Hanover* 475

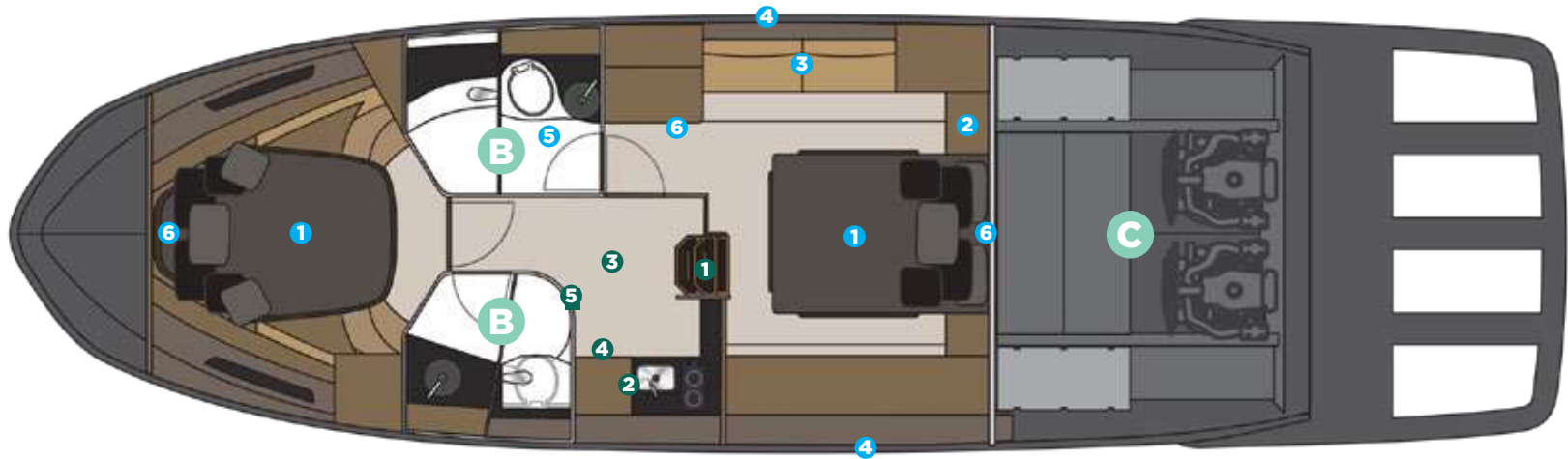
2024

## A SUITES

- 1 Double bed
- 2 Cabinet with Mirror
- 3 Lateral Sofa
- 4 Panoramic Windows
- 5 Ensuite Bathroom
- 6 Decorated Headrest

## B PASSAGEWAY

- 1 Ladder with 3 wide steps and handle
  - 2 Kitchen with sink, synthetic granite top, space for microwave, induction stove, minibar, niche and cabinet
  - 3 8'2 Headroom
  - 4 Ultra moisture resistant MDF furniture
  - 5 Upholstery in waterproof fabric, anti-mold nautical leather.
- Side walls covered with anti-mold foam and nautical leather



## B HEAD

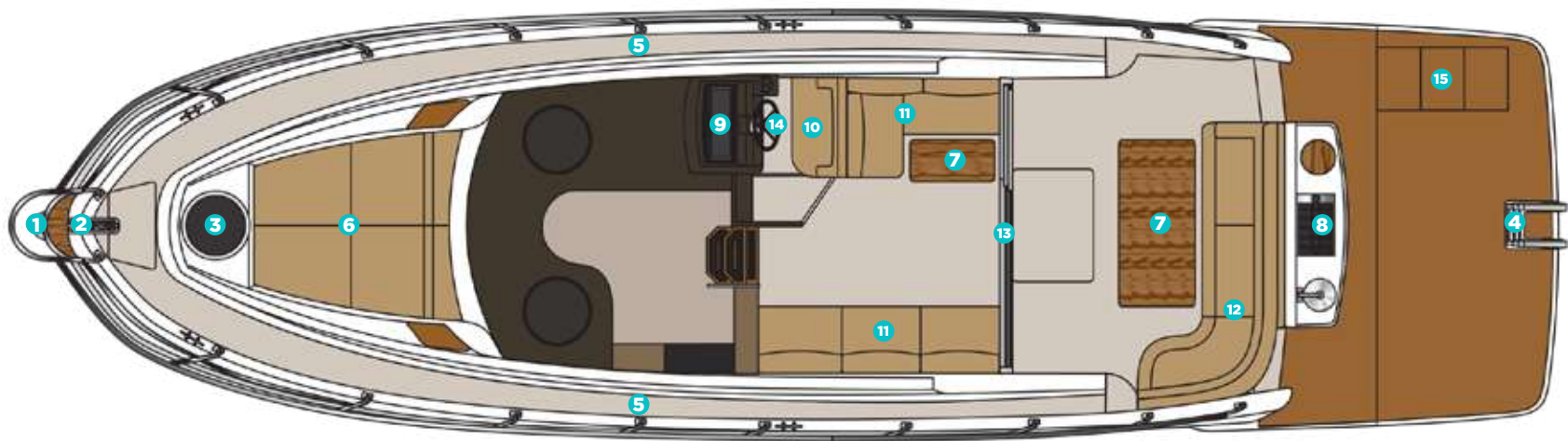
- Electric toilet with 22 gallon waste box, macerator pump and external nozzle
- Cabinet, sink in synthetic granite with Top-Mount bowl in tempered glass
- Wall Cabinet with mirror
- Decorative coating with glass insert
- Skylight
- 6'4 Headroom
- Tempered Glass Shower Enclosure
- Mixer Shower
- Teak floor mat and bench
- High Quality Laminate Flooring

## C ENGINE

- Interior in gray gelcoat
- Non-slip flooring
- Sound and heat insulation
- Compartment, sealed, for air conditioning and batteries
- 2 Exhaust fans
- Engine hatch, electric, gas springs, with lock
- Access door with gas pistons and lock
- Fuel tank with level gauge, aluminium

# HULL AND COCKPIT

- 1 bow eye
- 2 Stainless steel handrail, teak seat on the bow and lateral access
- 3 20" hatch in the bow from cabin to bow area
- 4 4-step telescopic ladder on platform
- 5 Broad walkway from Stern to Bow
- 6 Double bow solarium with adjustable backrest
- 7 2 Teak tables (Cockpit + Stern)
- 8 Gourmet Area with cover, sink, fridge, cutting board and grill
- 9 Leather Helm



- 10 Dual rider seat with leg support for sitting or standing rides
- 11 Cockpit Bench
- 12 Aft L-shaped bench seating with storage below
- 13 Aft sliding door, Stainless steel
- 14 Italian Steering Wheel
- 15 Heavy duty steps to the platform

An aerial photograph of a boat's wake in the ocean. The wake is a large, circular pattern of white foam and turquoise water, centered around a dark, circular area. The boat is visible at the top of the wake, moving towards the center. The overall color palette is dominated by dark blues and greens, with the white foam providing a stark contrast.

**CUSTOMIZE AND  
HAVE THE MOST UNIQUE  
VESSEL AT SEA**



# EXTERIOR PAINT OPTIONS



Grigio Silver



Tungsten Silver



Pure Gray



Nardo Gray



Orkney Gray (Highgloss)



Orkney Gray (Matte)



Moonstone Gray



Sequin Blue



Gales Black (Tuxedo) (Highgloss)



Gales Black (Tuxedo) (Matte)



Havanna Brown



Heraldic Blue



Orange Pearl



Moscou Red



Marrakesh Brown



Macaw Blue



# UPHOLSTERY OPTIONS



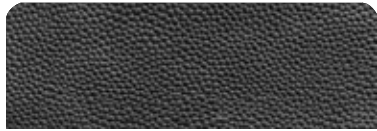
Fern



Terracota



Caramello



Black



Land Rover



Taupe



Ivory



Orange



Off White



Gray



Silver



Carbon Fiber



White



Beige



Matelasse Honeycomb



New Corolla



Blue



Corolla

# FURNITURE VINYL OPTIONS



Salina



Massal



Cherry



Patina



Alder



Bronze



Freije



Taupe Super Matte



Black Line



Taupe High Gloss



Canyon



Onix



Metallic



Gray Oak

# INTERIOR FLOORING OPTIONS



Alba



Almond



Pine



Amendola



Sand



Cement



Imbuia



Cumaru



Gray



Duna



Vintage

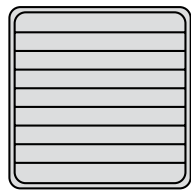


Kashmir

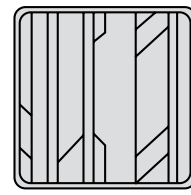


# DECK FLOORING OPTIONS

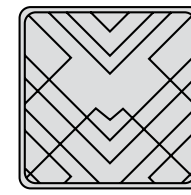
## PATTERNS



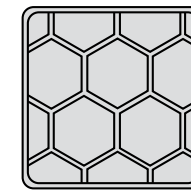
Classic



Aztec



Imperial



Beehive

## EVA



Tuscany



Ocher



Gray

## SYNTHETIC TEAK



Sand



Gray



Madeira

# INTERIOR PAINT OPTIONS



Ivory Beige



Mist Beige



Corolla Gray



Black



Terra Brown



White



Land Rover



Compass Gray

# STANDARD EQUIPMENT

## HULL AND DECK

- 6 Stainless steel cleats 10"
- 1 Bow Eye
- Stainless steel handrail, teak seat on the bow and lateral access
- Anchor System, bow protection Stainless Steel
- Water deck filler, Gas cap, Stainless Steel
- Tank breather, Stainless steel
- Thru Hull Fitting, Stainless Steel
- Drain Plug, stainless steel
- Fence, PVC, stainless steel coating
- 4 Portholes, 10", stainless steel
- 20" hatch in the bow from cabin to bow area
- 4 panoramic tempered glass windows
- Tempered glass windshield and anodized aluminum frame
- 4-step telescopic ladder on platform
- Broad walkway from Stern to Bow
- Double bow solarium with adjustable backrest
- Anchor Locker
- Windshield wiper
- Stainless steel handle for access to the bow and in the gourmet area
- Fender Racks, Stern
- 2 Storage compartments below the cockpit seats
- 2 Teak tables (Cockpit + Stern)
- Anti-mold leather upholstery
- Gourmet Area with cover, sink, fridge, cutting board and grill
- Hardtop, Sunroof, electric opening
- Leather Helm
- Cupholders, Acrylic
- Painting in white isophthalic gelcoat
- Instrument panel that supports up to two 9" electronics with built-in compass
- Dual rider seat with leg support for sitting or standing rides
- 1 Cockpit bench, Starboard
- 1 Cockpit bench, Port
- Aft L-shaped bench seating with storage below
- Cooler, Aft
- Trash receptacle
- Kitchen with headroom of 8'2
- Aft sliding door, Stainless steel
- High Quality Laminate Flooring
- Headroom of 6'5 in the cockpit and 6'8 Aft Patio

## PASSAGEWAY

- Ladder with 3 wide steps and handle
- Ultra moisture resistant MDF furniture
- Kitchen with sink, synthetic granite top, space for microwave, induction stove, minibar, niche and cabinet
- Upholstery in waterproof fabric, anti-mold nautical leather.
- Side walls covered with anti-mold foam and nautical leather
- High Quality Laminate Flooring
- 8'2 Headroom

## MASTER SUITE

- Double Bed
- Cabinet with Mirror
- Lateral Sofa
- Panoramic Windows
- Blinds
- Ensuite Bathroom
- Ceiling covered with anti-mold foam and nautical leather
- Decorated Headrest
- Reading Lights
- LED Lights
- High Quality Laminate Flooring

## BOW SUITE:

- Double bed
- Wall Cabinet with mirror
- Under the bed storage compartment
- Panoramic Windows
- Blinds
- Jack and Jill Bathroom
- Ceiling covered with anti-mold foam and nautical leather
- Decorated Headrest
- LED Lights
- High Quality Laminate Flooring

## HEADS

- Electric toilet with 22 gallon waste box, macerator pump and external nozzle
- Cabinet, sink in synthetic granite with Top-Mount bowl in tempered glass
- Wall Cabinet with mirror
- Decorative coating with glass insert
- Mixer Shower
- Tempered Glass Shower Enclosure
- 6'4 Headroom
- High Quality Laminate Flooring
- Teak floor mat and bench
- Skylight

## PUMPS AND TANKS

- Water tank, potable, 50 gal
- Fresh Water Pump 3500 GPH
- 3 Bilge Pumps, engine room, automatic
- 2 Bilge Pumps, amidships, automatic
- 2 shower sump bilge pump
- Showerhead, aft, with mixer
- Sink in kitchen, bathrooms, and gourmet area with stainless steel faucet and hot water
- Electric Boiler

## ELECTRICAL

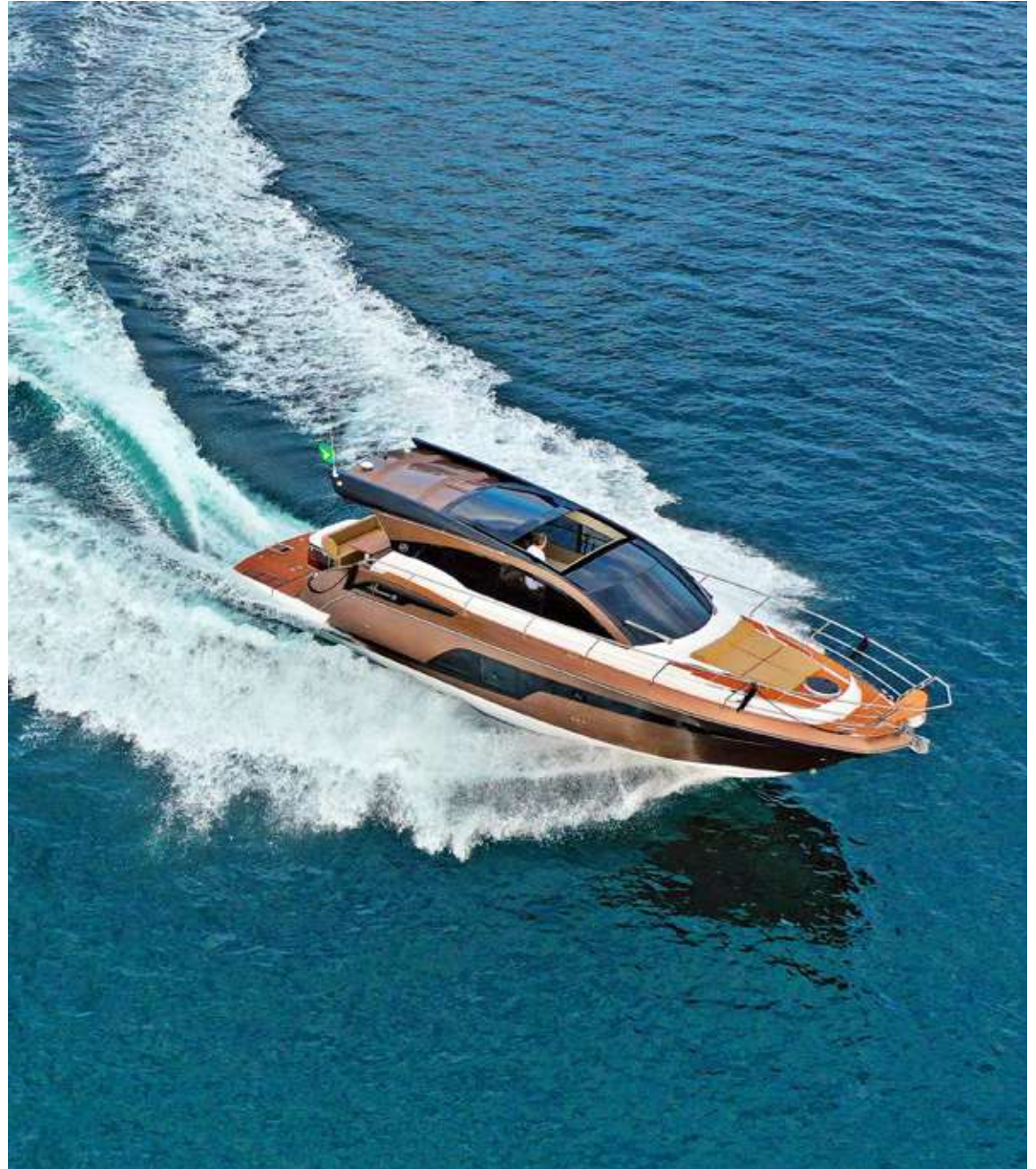
- Circuit breaker box
- Rotary switch for pier/generator/inverter
- Electrical Panel, Cockpit
- Navigation Lights
- LED on cabin ceiling, bathroom, cockpit, under seats and platform
- Engine room Illumination
- 110v sockets, cabin and bathroom
- 12v sockets / USB on helm and cabin
- Shore power socket
- Master switch for auxiliary and propulsion batteries
- Automatic charging relay for batteries
- Emergency Start
- 2 Auxiliary Batteries
- 2 Propulsion Batteries
- 1 Battery for optional generator
- Galvanic isolation

## ENGINE ROOM

- Interior in gray gelcoat
- Non-slip flooring
- Sound and heat insulation
- Compartment, sealed, for air conditioning and batteries
- 2 Exhaust fans
- Engine hatch, electric, gas springs, with lock
- Fuel tank, aluminum, with level gauge

## OPTIONS INCLUDED

- Anchor Windlass Electric System, 22lb + 150' chain and swivel
- VHF Radio w/ Antenna
- Premium Sound System
- Premium Marine Paint
- Synthetic teak or EVA on bow, cockpit and swim platform
- Marine Generator
- Air conditioning
- Electric trim tabs
- Headlight w/ remote
- Inverter Charger
- TV, cockpit, master suite, and stern cabin
- Induction Stove
- Refrigerator + Microwave
- Italian Steering Wheel
- Kenyon Electric BBQ
- Windshield wipers
- Hot Water Heater (Shower)
- Underwater Lights (pair)



# PRICING

Engine	TWIN MERCURY® AXIUS 380HP GAS & JOYSTICK PILOTING
GPS	RAYMARINE ELEMENT 7S
Sound System	BOSS SOUND SYSTEM + 6 JBL Marinized Speakers + Amplifier
Exterior Painting	1 Color (Hull)
Power Generator	KOHLER® 11KVA
VHF Radio w/ Antenna	✓
Syntetic Teak or EVA Flooring	✓
Macerator & Holding Tank	✓
Anchor Windlass Electric System	✓
2 x A/C (16,000 BTUS) (Cabin + Cockpit)	✓
Electric Trim Tabs (Flaps)	✓
Electric Sunroof Opening	✓
Power Inverter	✓
Refrigerator + Microwave	✓
Underwater Lights (Pair)	✓
Hot Water Heater (Shower)	✓
Kenyon Electric BBQ	✓
Induction Stove	✓
Front Light w/ Remote	✓
Charcoal Barbecue	✓

**BASE PRICE:**

**\$850,000**





# ADDITIONAL UPGRADES



Twin Volvo  
D6 - 400HP  
Diesel

**\$97,500**



Twin Volvo  
D6 - 440HP  
Diesel

**\$109,500**



Twin Volvo  
IPS600 - 440HP - Diesel  
& Joystick Piloting

**\$162,500**



Kohler® 11KVA  
Power Generator

**\$11,500**



GPS Raymarine®  
AXIOM 12

**\$11,950**



Fusion® Marine Sound System Kit  
+ 6 Speakers + Amplifier

**\$6,250**



Bottom  
Paint

**\$15,950**



Hydraulic Underwater  
Swim Platform

**\$25,950**



Isotherm 65L  
Fridge 12v

**\$3,650**



Isotherm 65L  
Freezer 12v

**\$3,650**



Electric Aft Shade  
(Stobag)

**\$4,950**



Manual Aft Shade  
w/ Poles

**\$4,450**



External Special  
Painting

**\$7,500**



Cockpit Glass  
Volvo 10'

**\$4,950**



Ice  
Maker

**\$3,650**

# HANOVER OWNERSHIP PROGRAM

---

At Hanover, we ensure an exciting stress-free experience from the moment you discover our brand.

## **STRESS-FREE PRICING**

Our entire lineup comes at our lowest price - no haggling needed. Leave the negotiations to used car salesmen, and enjoy a straightforward buying experience with us.

## **FIRST TRIP**

We've got you covered - you will get training and your first cruise comes with a captain by your side (up to 4 hours). Feel like a pro and make the most of your experience!

## **MAINTENANCE AND WARRANTY**

Every Hanover vessel includes a 5-Year Premier Level Hull Warranty, 1 Year General, Mechanical and Components Warranty, All Accessories & Electrical Parts Under The Original Manufacturer's Warranty.

Sail with complete confidence knowing you have a team of dedicated professionals at your service.

**Don't just own a boat, be part of the Hanover Lifestyle.**

*Hanover*

*Hanover*

[www.hanoveryachts.com](http://www.hanoveryachts.com)