



*Hanover* / 377

hanoveryachts.com / 2024



**The Hanover 377 is sure to turn heads.**

While cruising, the design flows like the waves of the sea, and the organic lines feel striking and natural, making this vessel spacious, premium, and powerful. Whoever holds the keys to this vessel will embody all of its qualities.

**FEEL THE POWER.**

*Hanover*



*Hanover 371*



2024





*Hanover* 377

2024

# TECHNICAL SPECIFICATIONS



**LENGTH**  
38' / 11.60 m



**BEAM**  
10' 10" / 3.22 m



**DRAFT**  
33" / 0.8m



**DRY WEIGHT**  
15,763 lbs / 7,150 kg



**FUEL TANK CAPACITY**  
250 gal / 946 L



**WATER TANK CAPACITY**  
50 gal / 190 L



**HOLDING TANK**  
20 gal / 75 L



**CAPACITY**  
15 day / 5 Night



**CRUISING SPEED**  
22-24 mph / 31.3 kph



**WIDE OPEN THROTTLE**  
43-45 mph / 69.2-72.4 kph



**DEADRISE**  
16°



**BRIDGE CLEARANCE**  
10'7" / 3.2 m  
12'7" / 3.8 m with radar  
or anchor light

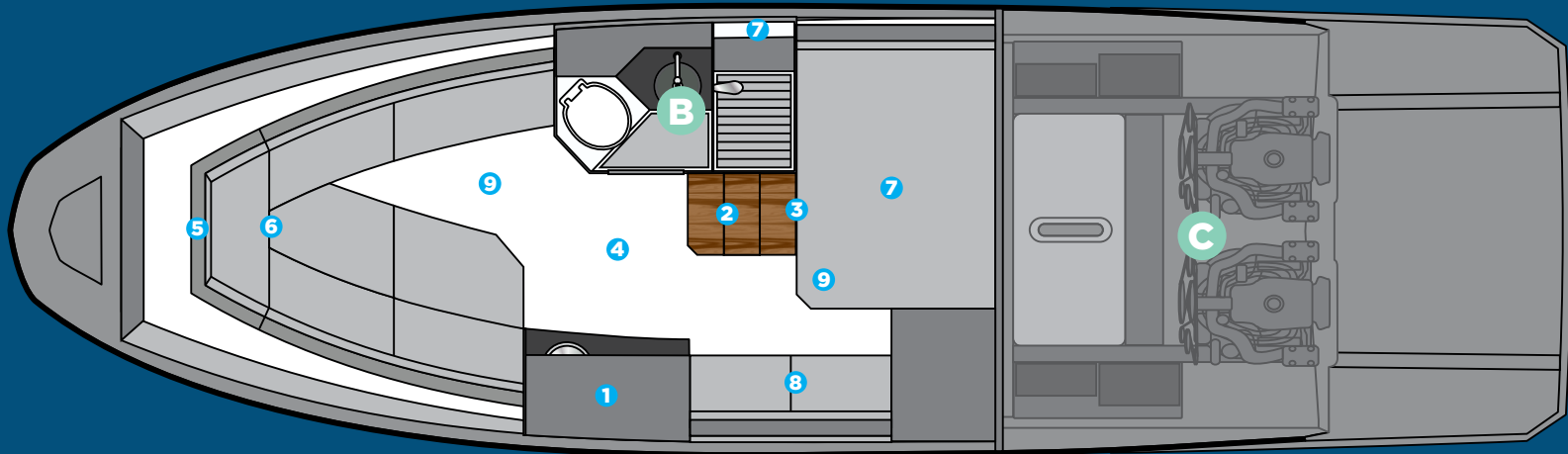


*Hanover* 377

2024

## A CABIN

- 1 Kitchen with sink, synthetic granite top, space for microwave, induction stove, fridge, 3 drawers and two cabinets
- 2 Stainless steel staircase with 3 wide teak steps
- 3 Acrylic access sliding door with lock and key
- 4 Vinilic special flooring
- 5 Decorative mirror on the bow
- 6 U-shaped sofa for 3 people convertibles into a double bed, with teak retractable table
- 7 Double bed in the middle ship cabin
- 8 Sofa in the middle ship cabin
- 9 Free standing up of 9' in cabin center



## B BATHROOM

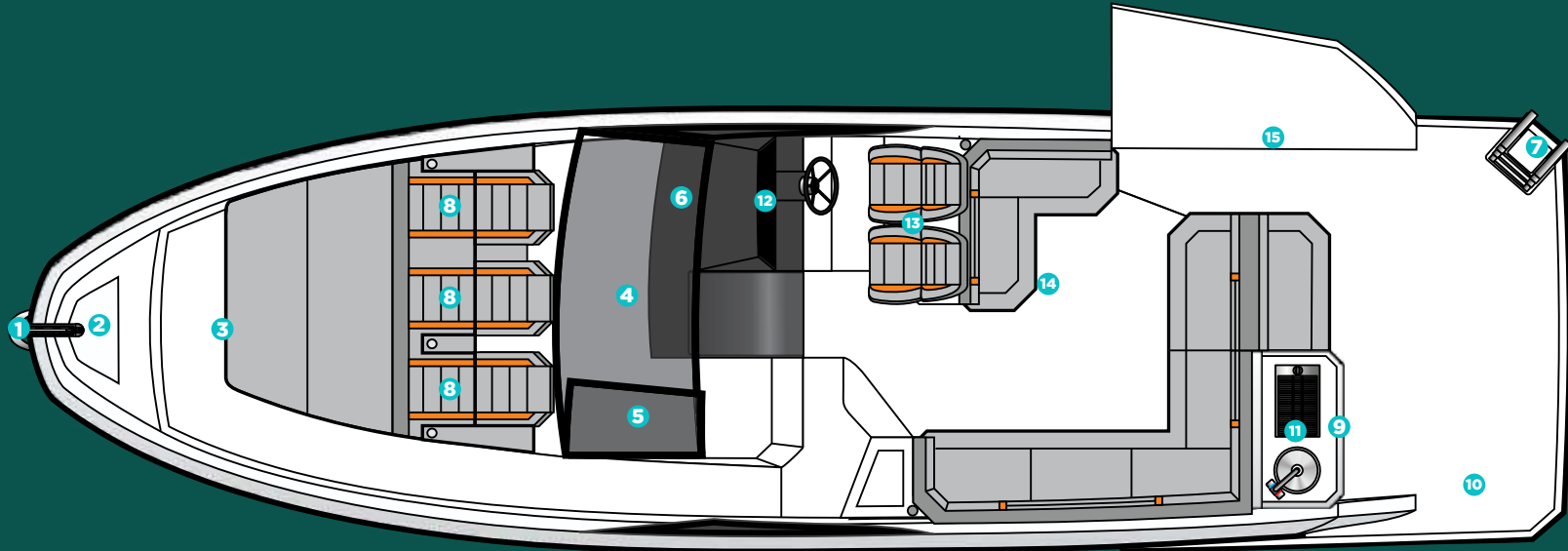
- Electric toilet with 22 gallon waste box, macerator pump and external nozzle
- Cabinet with two doors, sink in synthetic granite with bowl overlaid in tempered glass
- Air cabinet with two mirrored doors
- Decorative coating with glass inserts
- Shower box free standing height 6'2" /1,88 min
- Tempered glass box
- Shower with mixer
- Non-slip floor

## C ENGINE

- Interior in gray gelcoat
- Non-slip sole, flat
- Insulation, acoustic and thermal
- Fire extinguisher
- Compartment, sealed, for air conditioning
- Compartment, sealed, for batteries
- Exhaust fans (2)
- Engine room hatch
- Access door with gas pistons and lock
- Fuel tank, aluminum, with level gauge

# HULL AND COCKPIT

- 1 bow eye
- 2 Stainless steel handrail with teak seat in the bow
- 3 20" hatch in the bow from cabin to bow area
- 4 4 panoramic tempered glass windows
- 5 2 tilting tempered glass windows in the cockpit
- 6 Tempered glass windshield and anodized aluminum frame
- 7 4-step telescopic ladder on platform
- 8 Triple bow solarium with adjustable backrest
- 9 Handle stainless steel in the gourmet space



- 10 Teak table
- 11 Gourmet space with top lid and sink
- 12 Instrument panel that supports up to two 9" electronics with built-in compass
- 13 Dual rider seat with standing or sitting
- 14 Two L-shaped sectional sofa in the cockpit and another in the stern
- 15 Opening lateral deck - electrical opening - Beach Club System





**CUSTOMIZE AND  
HAVE THE MOST UNIQUE  
VESSEL AT SEA**

*Hanover*<sup>377</sup>

2024

# EXTERIOR PAINT OPTIONS



Grigio Silver



Tungsten Silver



Pure Gray



Nardo Gray



Orkney Gray (Highgloss)



Orkney Gray (Matte)



Moonstone Gray



Sequin Blue



Gales Black (Tuxedo) (Highgloss)



Gales Black (Tuxedo) (Matte)



Havanna Brown



Heraldic Blue



Orange Pearl



Moscou Red



Marrakesh Brown



Macaw Blue

# UPHOLSTERY OPTIONS



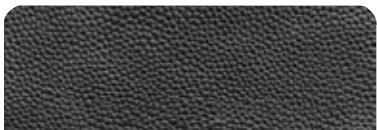
Fern



Terracota



Caramello



Black



Land Rover



Taupe



Ivory



Orange



Off White



Gray



Silver



Carbon Fiber



White



Beige



Matelasse Honeycomb



New Corolla



Blue



Corolla



# FURNITURE VINYL OPTIONS



Salina



Massal



Cherry



Patina



Alder



Bronze



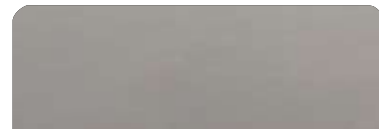
Freije



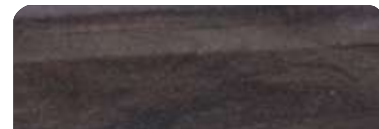
Taupe Super Matte



Black line



Taupe High Gloss



Canyon



Onix



Metallic



Gray Oak

# INTERIOR FLOORING OPTIONS



Alba



Almond



Pine



Amendola



Sand



Cement



Imbuia



Cumaru



Gray



Duna



Vintage

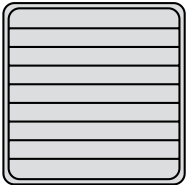


Kashmir

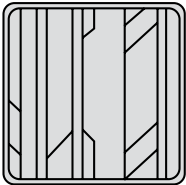


# DECK FLOORING OPTIONS

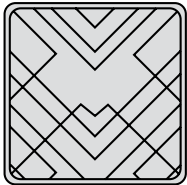
## PATTERNS



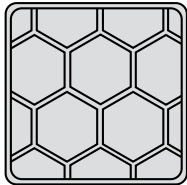
Classic



Aztec



Imperial



Beehive

## EVA



Tuscany



Ocher



Gray

## SYNTHETIC TEAK



Sand



Gray



Madeira

# INTERIOR PAINT OPTIONS



Ivory Beige



Mist Beige



Corolla Gray



Black



Terra Brown



White



Land Rover



Compass Gray



# AMENITIES AND PREMIUM SPACE

There's plenty of room for sunbathing on the bow and a hangout area at the stern, so bring your friends and family; there's only good times on the HANOVER 377.

Create and share memories that will last a lifetime. The choice is yours.









Hanover 377

2024

# STANDARD EQUIPMENT

## HULL AND DECK

- 8" through bolted stainless steel cleats (06 count)
- 1 bow eye
- 2 eyes at the stern
- Stainless steel handrail with teak seat in the bow
- Self-draining floor
- 20" hatch in the bow from cabin to bow area
- 4 panoramic tempered glass windows
- 2 tilting tempered glass windows in the cockpit
- Tempered glass windshield and anodized aluminum frame
- 4-step telescopic ladder on platform
- Double bow solarium with adjustable backrest
- Handle stainless steel in the gourmet space
- Compartment for fenders on the platform floor
- 5 compartments below the cockpit seats
- Teak table
- Upholstery in anti-mold leather
- Gourmet space with top lid, sink, fridge, cutting board
- T-Top with an electric sunroof
- Storage, acrylic
- Acrylic cup holder in the cockpit
- Instrument panel that supports up to two 9" electronics with built-in compass
- Dual rider seat with standing or sitting
- Two seating areas in the cockpit
- Cooler
- Garbage Displacement
- Opening lateral deck - electrical opening - Beach Club System

## HEAD

- Electric toilet with 22 gallon waste box, macerator pump and external nozzle
- Cabinet with two doors, sink in synthetic granite with bowl overlaid in tempered glass
- Air cabinet with two mirrored doors
- Decorative coating with glass inserts
- Shower with mixer
- Tempered glass box
- Shower box free standing height 6'2" /1,88 m
- Non-slip floor

## CABIN

- Acrylic access sliding door with lock and key
- Stainless steel staircase with 3 wide teak steps
- Ultra moisture resistant MDF furniture
- Kitchen with sink, synthetic granite top, space for microwave, induction stove, fridge, 3 drawers and two cabinets
- Vinilic special flooring
- Decorative mirror on the bow
- U-shaped sofa for 3 people convertibles into a double bed, with teak retractable table
- Double bed in the middle ship cabin
- Sofa in the middle ship cabin
- Coverings in waterproof fabric or anti-mold nautical leather
- Side walls covered with anti-mold foam and nautical leather
- Luxury layette kit with 10 cushions
- Free standing up of 9' in cabin center

## ENGINE ROOM

- Interior in gray gelcoat
- Non-slip sole, flat
- Insulation, acoustic and thermal
- Fire extinguisher, fixed, with remote activation
- Compartment, sealed, for air conditioning and batteries
- Exhaust fans (2)
- Hatch, electric, with push-button
- Access door with gas pistons and lock
- Fuel tank, aluminum, with level gauge

## PUMPS AND TANKS

- Water tank, potable, 50 gal
- Fresh water pump
- Bilge pumps, engine room, with automatic switches
- Bilge pump, amidships, with automatic switch
- Collection box for shower with pump
- Showerhead, aft, with mixer

## ELECTRICAL

- Circuit breaker board
- Selector switch for pier/generator/inverter
- Electrical panel in the cockpit with special switches
- Navigation lights
- Anchoring lights
- Indirect LED lighting on the cockpit ceiling, bathroom, cabin, cabinet and under the sofas and dashboard
- LED spotlights on the cabin and cockpit ceiling
- Lighting in the engine room
- 120v sockets in the cockpit, cabin and bathroom
- 12v / USB sockets on the dashboard and in the cabin
- Shore power socket
- Individual master switches for accessory batteries and motors

## OPTIONS INCLUDED

- Synthetic teak or EVA on bow, cockpit and swim platform
- Sound system
- Anchor Windlass Electric System
- Anchor, 22 lbs, with chain
- VHF Radio w/ Antenna
- Sunroof, electric opening
- Holding tank with macerator
- Air conditioning, 12,000 BTU
- Generator
- Refrigerator,
- Trim tabs, electric
- Spotlights
- Shorepower
- Inverter and charger system + internal AC
- Gourmet Area

# ESSENTIAL PACKAGE

# PREMIUM PACKAGE

## TWIN MERCURY MERCUISER AXIUS 300HP W/ JOYSTICK PILOTING

## TWIN MERCURY MERCUISER AXIUS 350HP W/ JOYSTICK PILOTING

Engine

GPS

Sound System

Exterior Painting

Power Generator

A/C

Power Charger 100A

VHF Radio w/ Antenna

Synthetic Teak or EVA Flooring

Anchor Windlass Electric System

Electric Trim Tabs (Flaps)

Fenders & Lines

USCG Boating Safety Kit

Shore Power + Shore Cord 50A

Macerator Pump and Holding Tank

GPS SIMRAD® GO7 (7")

BOSS® SOUND SYSTEM +  
6 JBL® Marine Speakers + Amplifier

1 Color (Hull)

ONAN® 5KVA

12,000 BTU (Cabin)



GPS SIMRAD® GO9 (9")

FUSION® SOUND SYSTEM +  
6 Marine Speakers + Amplifier

2 Colors or More  
(Hull, Deck or HT)

KOHLER® 6KVA

12,000 + 6,000 BTU  
(CABIN - COCKPIT)



Headlights w/ Remote (Cruising Spotlight)	✓	✓
Galvanic Isolator (Electrical Protection)	✓	✓
Cradle for Transport	✓	✓
Windshield Wipers	✓	✓
Heavy Duty Folding Table (Cockpit)	✓	✓
LED 24" TV Set and Mounting		✓
Isotherm® 65L Fridge 12V		✓
Design Items Set (Pillows, Beddings, Cushions, Towels, Accessories)		✓
Italian Steering Wheel		✓
Teak Table On Stern (Platform Extra Table)		✓
Bar Stools/chairs On Stern (Kit Of 2 Banquets)		✓
Hot Water System - Heater (Shower)		✓
Induction Electric Stove (Cabin)		✓
Mosaic / Glass Cover (Kitchen Wall)		✓

**\$390,000**

**\$424,000**



# ADDITIONAL UPGRADES



Electric Fun Deck Platform

**\$14,500**



Hydraulic Underwater Swim Platform

**\$23,500**



MC<sup>2</sup> Quick Gyro X10 Stabilizers

**\$46,500**



Raymarine Radar Quantum I

**\$6,750**



Raymarine Radar Quantum II

**\$7,250**



GPS Raymarine® Element 7s (7")  
(Additional Screen)

**\$2,250**



GPS Raymarine® AXIOM (9")  
(Additional Screen)

**\$4,950**



GPS Raymarine® AXIOM (12")  
(Additional Screen)

**\$7,950**



GPS Garmin® MAP 923xsv NMEA & Transducer (9")  
(Additional Screen)

**\$4,995**



GPS Garmin® MAP 1242xsv NMEA & Transducer (12")  
(Additional Screen)

**\$8,750**



GPS SIMRAD® Go7 (7")  
(Additional Screen)

**\$3,295**



GPS SIMRAD® Go9 (9")  
(Additional Screen)

**\$4,350**



GPS SIMRAD® NSS12 (12")  
(Additional Screen)

**\$6,950**



Mercury® Vessel View (7")  
(Additional Screen)

**\$3,950**



Mercury® Vessel View (9")  
(Additional Screen)

**\$4,500**

# ADDITIONAL UPGRADES



Manual Aft Shade  
w/ 2 Poles

**\$2,950**



Manual Aft Shade  
(Stobag)

**\$3,200**



Electric Aft Shade  
(Stobag)

**\$4,200**



Bow Tent  
(Bimini Top On Bow)

**\$1,250**



Eisenglass  
Enclosure

**\$3,200**



RGB Changing Lights  
(Cockpit)

**\$2,750**



Fusion® Marine Amplifier  
(Extra) (2 Channels)

**\$1,595**



Fusion® Marine  
Speakers (Extra Pair)

**\$895**



JBL® Marine Amplifier  
(Extra) (2 Channels)

**\$1,395**



JBL® Marine Speakers  
(Extra Pair)

**\$695**



Underwater Lights  
(Pair)

**\$1,500**



Bow  
Thrusters

**\$14,000**



Bottom Paint  
Anti-fouling Coppercoat Paint

**\$9,500**



Mid Ship Cabin Room  
Enclosure (Wood)

**\$3,750**



Main Cabin Room  
Enclosure (Wood)

**\$4,995**



# ADDITIONAL UPGRADES

---



Leather Cover Panel  
(Dashboard Top Part)

**\$1,250**



Leather Cover Panel  
(Complete Dashboard & Helm)

**\$2,995**



Waterproof Dashboard  
Cover (Helm)

**\$450**



Set of Waterproof  
Exterior Seat Covers

**\$2,200**



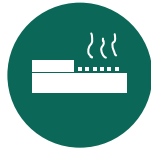
Complete Branded  
Boat Nylon Cover

**\$3,200**



Fireboy® - Advanced  
Automatic Anti-fire System

**\$9,500**



Kenyon Electric Grill  
(Stern)

**\$3,750**



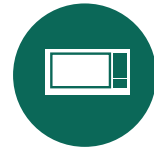
Refrigerated 12V  
Drawer (Cockpit)

**\$2,950**



Ice Maker  
(Cabin)

**\$3,495**



Microwave

**\$750**

# PREMIUM UPGRADES

Got Essential but want more?  
Upgrade to our **Premium** options.



Twin Mercury® Mercruiser Axis  
350HP w/ Joystick Piloting

**\$11,500**



A/C System 6,000 BTU  
(Extra Unit - Cockpit )

**\$4,245**



A/C System 16,000 BTU  
(Upgrade from 12,000 BTU - Cabin)

**\$1,200**



Kohler® 6KVA  
Power Generator

**\$2,250**



GPS SIMRAD®  
Go9 (9")

**\$1,250**



Fusion® Marine Sound System Kit  
+ 6 Speakers + Amplifier

**\$2,450**



External Double Painting  
(2 Or More Colors, Hull, Deck Or HT)

**\$2,500**



Mosaic / Glass Cover  
(Head Wall)

**\$750**



LED 24" TV Set  
And Mounting

**\$950**



Induction Electric  
Stove (Cabin)

**\$950**



Isotherm 65L  
Fridge 12v

**\$2,500**



Italian Steering  
Wheel

**\$750**



Hot Water System  
Heater (Shower)

**\$3,950**



Bar Stools/Chairs on Stern  
(Kit Of 2 Banquets)

**\$950**



Design Items Set  
(Pillows, Beddings, Cushions,  
Towels, Accessories)

**\$3,295**



Teak Table On Stern (Platform Extra Table) **\$850**

# PREMIUM+ UPGRADES

Got **Premium** but want more?  
Upgrade to our **Premium+** options.



Twin Mercury® Mercruiser Axis  
380HP w/ Joystick Piloting

**\$9,975**



Twin Mercury® Mercruiser  
Axis 320HP Diesel

**\$59,975**



Twin Mercury® Mercruiser  
Axis 350HP Diesel

**\$64,000**



Volvo Twin D4  
320HP Diesel

**\$79,975**



Volvo Twin D6  
380HP Diesel

**\$99,750**



External Complete  
Special Paint And Or  
Color Selection

**\$2,950**



JL AUDIO KIT 1  
Media Master,  
6 Speakers, AMP

**\$2,050**



JL AUDIO KIT 2  
Media Master, 8 Speakers,  
Media Controller, AMP, SUB

**\$6,950**



GPS SIMRAD®  
NSS12 (12")

**\$2,600**



A/C System  
9,000 BTU (Cockpit)

**\$750**



Kohler® 9KVA  
Power Generator

**\$6,950**



Kohler® 11KVA  
Power Generator

**\$12,950**

# HANOVER OWNERSHIP PROGRAM

---

At Hanover, we ensure an exciting stress-free experience from the moment you discover our brand.

## **STRESS-FREE PRICING**

Our entire lineup comes at our lowest price - no haggling needed. Leave the negotiations to used car salesmen, and enjoy a straightforward buying experience with us.

## **FIRST TRIP**

We've got you covered - you will get training and your first cruise comes with a captain by your side (up to 4 hours). Feel like a pro and make the most of your experience!

## **MAINTENANCE AND WARRANTY**

Every Hanover vessel includes a 5-Year Premier Level Hull Warranty, 1 Year General, Mechanical and Components Warranty, All Accessories & Electrical Parts Under The Original Manufacturer's Warranty.

Sail with complete confidence knowing you have a team of dedicated professionals at your service.

**Don't just own a boat, be part of the Hanover Lifestyle.**

*Hanover*

*Hanover*

[www.hanoveryachts.com](http://www.hanoveryachts.com)