

96 ft 2016 Sanlorenzo SL96, Muma

US\$5,150,000

Fort Lauderdale, Florida, United States



Boat Details

Make:	Sanlorenzo	Class:	Flybridge	Cabins:	4
Model:	SL96	Hull Material:	Fiberglass	Heads:	5
Year:	2016	Drive Type:	V Drive	Fuel Type:	Diesel
Length:	96 ft	Beam:	22 ft 2 in	Max Speed:	29 kn
Price:	US\$5,150,000	Boat Location:	Fort Lauderdale, Florida, United States	Max Draft:	6 ft 4 in
Condition:	Used	Name:	Muma		



Christian Ferrara | YachtCreators

2890 Marina Mile Road, Fort Lauderdale, Florida, United States

Tel: **2038705234**

cferrara@yachtcreators.com

www.yachtcreators.com

Description

2016 SANLORENZO SL96

This Sanlorenzo SL96 is a 29.1m luxury flybridge yacht, built in GRP on a planing hull by the famous Italian shipyard Sanlorenzo and delivered in 2016 as part of their SL line. She was designed by Francesco Paszkowski and she can be registered under 24m.

Powered by twin 2216 Hp MTU Diesel engines, she can reach a top speed of 29 knots and cruise at 24 knots. She can comfortably accommodate up to 9 guests in 4 en-suite cabins, including the Owner's stateroom forward on the main deck, while a large VIP cabin and 2 twin cabins (one with additional Pullman bed), are situated on the lower deck. In addition, 4 crew members will be waiting on their every need.

The yacht comprises teak decks throughout and was originally built for a knowledgeable and demanding Owner to a very high standard and with excellent taste. She has always been used privately and benefits of EU VAT paid status.

This Sanlorenzo SL96 exudes elegance and attention to the smallest of details. Every inch of the yacht defines luxury and perfection. The idea of Francesco Paszkowski's design was to cut off every single edge and to round each angle. The result is that a sort of ideal, continuous line connects each piece of the and high-quality furniture to the other and to the walls. The interior is beautifully finished to contemporary Italian style, including Minotti and Paola Lenti loose furniture and a fully equipped Boffi galley.

In turn-key condition, with low hours and a comprehensive list of options including zero-speed stabilizers, this flybridge yacht for sale is one of the most elegant on the market in her category.

Information & Features

MTU 16V 2000 M84 (Engine 1)

Type:	Inboard	Drive Type:	V Drive
Fuel Type:	Diesel	Power:	2216 hp
Hours:	1280		

MTU 16V 2000 M84 (Engine 2)

Type:	Inboard	Drive Type:	V Drive
Fuel Type:	Diesel	Power:	2216 hp
Hours:	1280		

Dimensions

LOA:	95 ft 6 in
Beam:	22 ft 2 in
Max Draft:	6 ft 4 in

Weights

Dry Weight:	216,053 lb
-------------	-------------------

Speed

Cruising Speed:	24 kn
Max Speed:	29 kn

Tanks

Fuel: **3,038 gal**

Fresh Water: **502 gal**

Accommodations

Cabins: **4**

Heads: **5**

Other

Hull Shape: **Planing**

Builder: **Sanlorenzo**

Flag Of Registry: **Malta**

Designer: **Francesco Paszkowski**

Electrical Equipment

- Generator: 2x 45 kW, 2800 hours

ACCOMMODATION:

9 Guests in 4 en-suite staterooms.

Guest Cabin Configuration:

- 5 Master's cabin at bow on the main deck with double king-size bed, 2 dressing wardrobes, closet, en-suite bathroom with double sinks and tub/shower compartment
- VIP cabin belowdecks with double island bed, walk-in wardrobe, en-suite bathroom with double sinks and shower
- 2x Twin guest cabins below decks with closets, en-suite bathrooms including shower and 1 x additional Pullman bed on port side cabin

Crew Accommodation:

- Crew area for 4 crew with 2 bunk-bed cabins, each with en-suite facilities

Fully equipped BOFFI galley and crew mess also on the lower deck

Main deck with main saloon, formal dining area, day toilet

Helm in raised pilothouse

MAIN MACHINERY:

- Electric stabilizer fins with zero-speed function
- Electric bow thruster
- Hydraulic stern thruster
- Generators: 2x 45 kW
- Generators Hours: 1590 h (each - Nov. 2023)
- GLENDINNING Cablemaster: CM8 for shore sockets 100/125A
- 6x Battery chargers
- Black/Grey Water Treatment: TECNICOMAR Ecomar 32
- Water Maker: IDROMAR 230 l/h
- Water Heaters: 2x 100 l/h boilers

SATELLITE ANTENNAS:

- HARBOUR hotspot Antenna
- SEATEL ST24E antenna GPS
- Radar open array 48"
- VHF
- TV
- 4G Wi-Fi modem

INTERIOR ACCESSORIES:

MAIN DECK

Living Area:

- Stained grey oak floor with anti-slip treatment; lacquered wood ceiling with a central stripe in Nuvola Canapa
- Leather
- Nuvola Canapa leather window frames
- Dining area wall in Nuvola Canapa leather and satin metallic inserts
- Fumè mirror on starboard side
- Storage cabinets in grey oak on port side
- Grey satin oak bulkhead storage with metallic inserts
- Nuvola Canapa leather TV cabinet/ desk
- “L” shaped light grey sofa
- Leather armchair
- Smoking table by MINOTTI
- Grey marble table
- 10x Nuvola Canapa leather chairs
- Manual drapes

Daily Toilet:

- Calacatta marble floor and sink top
- Door
- Sink furniture and walls in oak
- Gloss lacquered ceilings

Master Cabin:

- Moquette floor
- Lacquered wood ceilings with central zone in Nuvola Canapa leather
- Stained grey satin oak bulkheads with mirror TV cover
- Nuvola Canapa leather window frames
- Stained grey oak bow cabinet
- Fumè mirror with metal frame door
- Grey satin oak ship's side furnitures with satin metallic inserts
- Nuvola Canapa leather vanity desk
- Bed and nightstand
- Nuvola Canapa leather top and black-nichel base MINOTTI bench
- Master Bathroom:
- Gloss marble Calacatta floor
- Shower and sink top
- Gloss lacquered wood ceilings and bulkheads
- Grey oak sink cabinet

LOWER DECK

VIP Cabin:

- Moquette floor
- Lacquered wooden ceilings
- Over the bed zone in Nuvola Canapa leather
- Grey oak bulkheads
- Grey satin oak TV bulkhead
- Nuvola Canapa leather pullman bed
- Grey oak bulkhead cabinet
- Nuvola Canapa bench by MINOTTI
- Safe

VIP Bathroom:

- Gloss Calacatta marble floor
- Gloss lacquered wood ceilings
- Shower and bulkheads
- Satin grey oak sink cabinet

Guest Cabins (x2):

- Moquette floor
- Lacquered wooden ceilings
- Over the bed zone in Nuvola Canapa leather
- Grey oak bulkheads
- Grey satin oak TV bulkhead
- 2x Nuvola Canapa leather single sliding beds
- Additional Pullman bed in port side cabin

Guest Bathrooms (x2):

- Gloss Calacatta marble floors
- Gloss lacquered wood ceilings
- Showers and bulkheads
- Satin grey oak sink cabinets

Galley:

- Allura vinyl floor
- Lacquered wood ceilings
- Natural satin oak bulkheads
- Black gloss granite worktop in galley
- Table with oak
- Expandable top and inox base
- 2x Stools
- Oak sofa with Nuvola Leather cushions
- Extra insulations between galley and Master cabin

Crew Area:

- Moquette floor
- Gloss lacquered ceilings
- Natural oak bulkheads and furniture
- Gloss lacquered for ceilings
- Floor and shower in bathroom
- Painted teak shower floor

NAVIGATION AND COMMUNICATION ELECTRONICS:
--

Wheelhouse:

- MTU electronic engine controls
- MTU electronic engine displays
- RAYMARINE Gold package upgrade
- 2x Multi-function monitors (plotter, radar, GPS)
- Touchscreen management system for the utilities on board
- Speedometer
- Depth sounder
- Anemometer
- Rudder angle sensor
- Autopilot
- VHF

Flybridge:

- MTU electronic engine controls
- MTU electronic engine displays
- 1x Multi-function monitor (plotter, radar, GPS)
- Touchscreen management system for the utilities on board
- Speedometer
- Depth sounder
- Anemometer
- Rudder angle sensor
- Autopilot
- VHF

ENTERTAINMENT:

Main Deck Saloon:

- SAMSUNG LED TV 48" with up/down system
- 1x Multi area amplifier with AirPlay
- Home theatre kit with subwoofer
- 2x Ceiling integrated speakers connected to cockpit, flybridge and bow area
- 1x DVD Blu-ray 3D reader
- Mini remote-control station

Dining Area:

- 2x Ceiling integrated speakers

Master Cabin:

- SAMSUNG LED TV 48"
- Home theatre kit with subwoofer
- 2x Ceiling integrated speakers
- 1x DVD Blu-ray 3D reader

Lower Deck VIP Cabin:

- SAMSUNG LED TV 40"
- Compact Hi-Fi system
- 2x Ceiling integrated speakers
- Integrated DVD reader

Guest Cabins:

- SAMSUNG LED TV 32"
- 1 x Compact Hi-Fi system
- 2 x Ceiling integrated speakers
- Integrated DVD reader
- Remote control

Crew Area:

- TV predisposition
- Compact stereo and DVD reader
- 2x Ceiling integrated speakers

Flybridge:

- SAMSUNG LED TV 40" in pilot cabinet
- 2x Ceiling integrated speakers connected to the saloon

Stern Cockpit:

- 2x Ceiling integrated speakers connected to the saloon

CONTROL AND ALARM SYSTEMS:

- CCTV camera system with 3 cameras in engine room (2 fixed + 1 rotating & tilting)
- 2 x Fixed cameras in cockpit
- 1 x Monitor in wheelhouse with DVR and 1 additional SB172 17" monitor in crew area

DOMESTIC EQUIPMENT:

Galley:

- BOFFI galley
- 90cm Cooking top
- Extractor hood
- Microwave oven
- 90cm Oven
- ZANUSSI dishwasher
- GAGGENAU fridge
- GAGGENAU freezer
- Food lift
- Main Deck Saloon:
- FRIGONAUTICA fridge
- GAGGENAU wine cooler

Flybridge:

- SIEMENS grill
- FRIGONAUTICA fridge
- VITRIFRIGO icemaker

Crew Area:

- MIELE washing machine
- MIELE tumble dryer

DECK EQUIPMENT:

- 4x Underwater lights
- Compressed air system with 4 connections (bow area, beach area, engine room, flybridge)
- Hydraulic lifting system for swimming platform
- Electro-hydraulic telescopic gangway
- Manual swim ladder
- Opening garage
- Tender crane in the garage's ceiling
- 3rd Fixed control station MTU on cockpit
- Hydraulic trim tabs
- 2x Windlasses 4000W
- Increased chain length (125 m)
- 2x Mooring winches 2000W

Stern Cockpit:

- Summer Norwegian cover
- Micro-perforated fabric for summer cover aft
- 2x RODA armchairs
- GRP custom sofa
- Electric up/down table

Main Deck:

- Port side lateral fold-down balcony in saloon with sliding door

Bow Area:

- GRP bench with cushions

Flybridge:

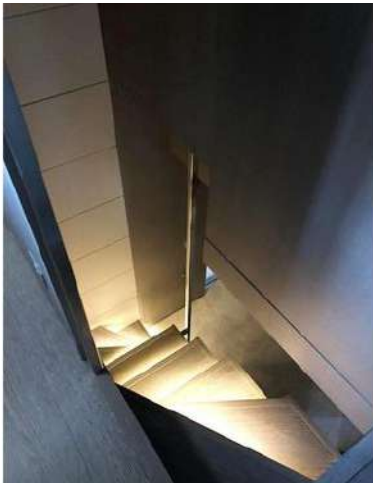
- GRP hardtop
- Teak floor
- Exterior furniture by POLA LENTI
- Bar cabinet by BOFFI
- Inox column shower
- 8-people table
- 3x Sofas
- Sun awning area with cushions

Disclaimer

The Company offers the details of this vessel in good faith but cannot guarantee or warrant the accuracy of this information nor warrant the condition of the vessel. A buyer should instruct his agents, or his surveyors, to investigate such details as the buyer desires validated. This vessel is offered subject to prior sale, price change, or withdrawal without notice.



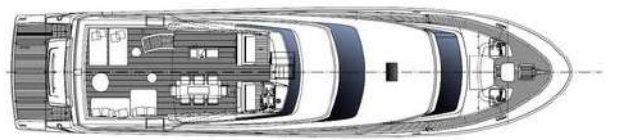






SL 96

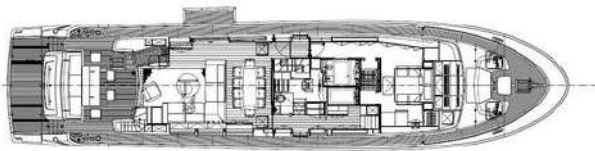
LAYOUT



Flying bridge

SL 96

LAYOUT



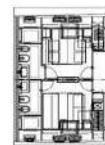
Main Deck

SL 96

LAYOUT



Lower Deck



Transformable tip's cabin